

The Cabin Warehouse

Mini Allrounder



Cabin Specifications:

- ◉ **Price:** \$6,450 incl GST for the basic kit.
- ◉ **Built size:** 3.61m x 2.70m (9.7m) Height 2.50/2.05
- ◉ **Flat packed:** 2.25m x 2.7m Height 650mm.
- ◉ **Wind rating:** N2
- ◉ **Building type:** As a shed or extra room
- ◉ **Building timeframe:** 1-2 days including foundation with 3 people.
- ◉ **Ease of build:** All the cabins from the Allrounder series are engineered to be quick and easy to install.
- ◉ **General build info:** Full engineering drawings provided on purchase and site-specific services available. These kits can be built DIY or talk to us about other build options.
- ◉ **Manufacturing info:** The cabins are Australian engineered and come factory direct from China. The foundations are Australian made from either Hot dipped galvanised steel or DuraGal. All products strictly comply with Australian standards and include a replacement guarantee.

House Materials:

- ◉ Steel frame base
- ◉ Plywood floor.
- ◉ **External walls:** Steel sandwich panel with 75mm EPS insulation. White paint finish.
- ◉ **Roof:** Steel sandwich panel with corrugated roofing + 50mm EPS insulation. White paint finish.
- ◉ **Internal walls:** Steel sandwich panel with 50mm EPS insulation. White paint finish.
- ◉ **Doors:** Aluminium with EPS foam.
- ◉ **Windows:** Aluminium frame with Australian standard glass.
- ◉ All building screws and bolts included.
- ◉ Waterproofing and guttering included for gables.

Optional extras:



- Internal walls = **\$400**
Use of one of our pre-existing plans (1 or 2 bedroom) or design your own. Send us your ideas and we can design it for you.
- PVC Floor finish (lino) = **\$300**



- 1.2m Kitchen bench (Includes mixer) = **\$1200**



- Glass sliding door = **\$650**
(Door measures 2200mm high x 1800mm wide)



- Extra windows = **\$300**

- Bathroom pack = **\$700** (includes glass shower room, base, taps and shower head + toilet and wash basin)

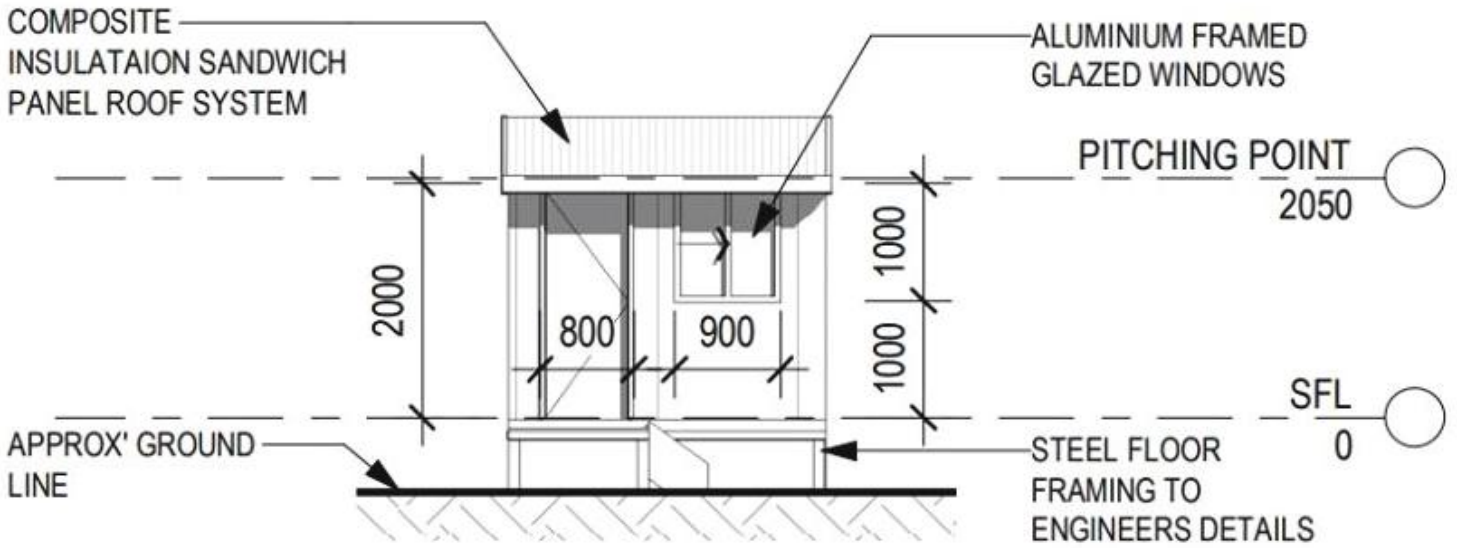


- Deck & Veranda from **\$500**



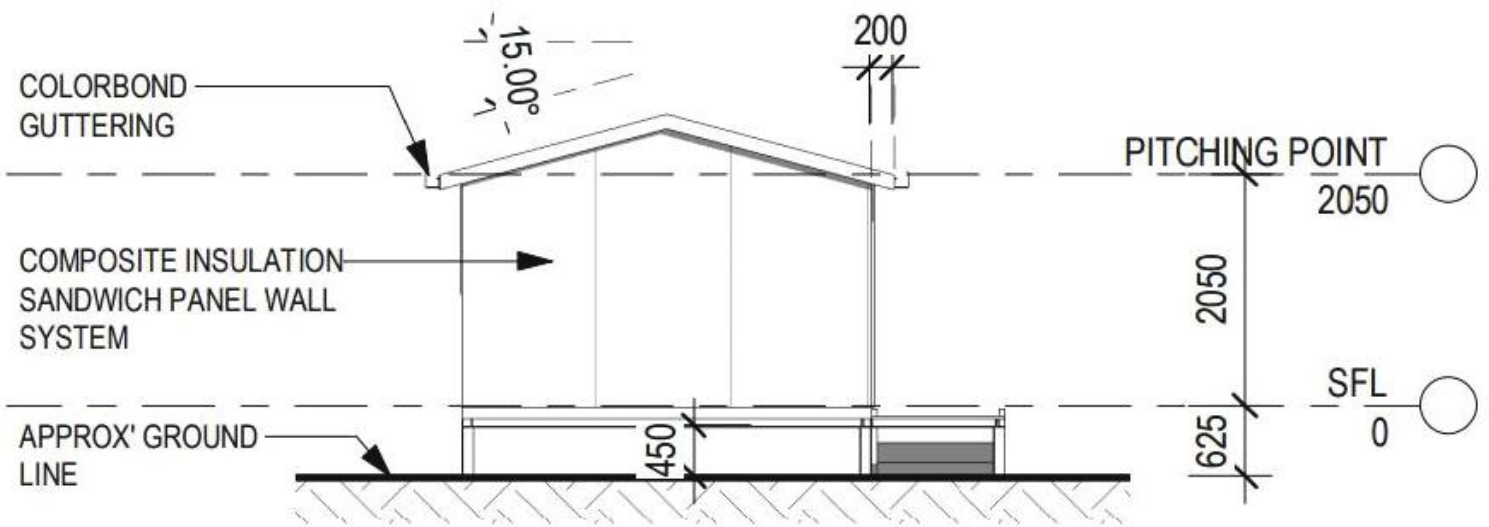
- Customised steel foundation = **\$1200**
- Shipping from **\$300**. Contact us for an exact quote on delivery.

Total package price from \$8,740 including GST + delivery and build.



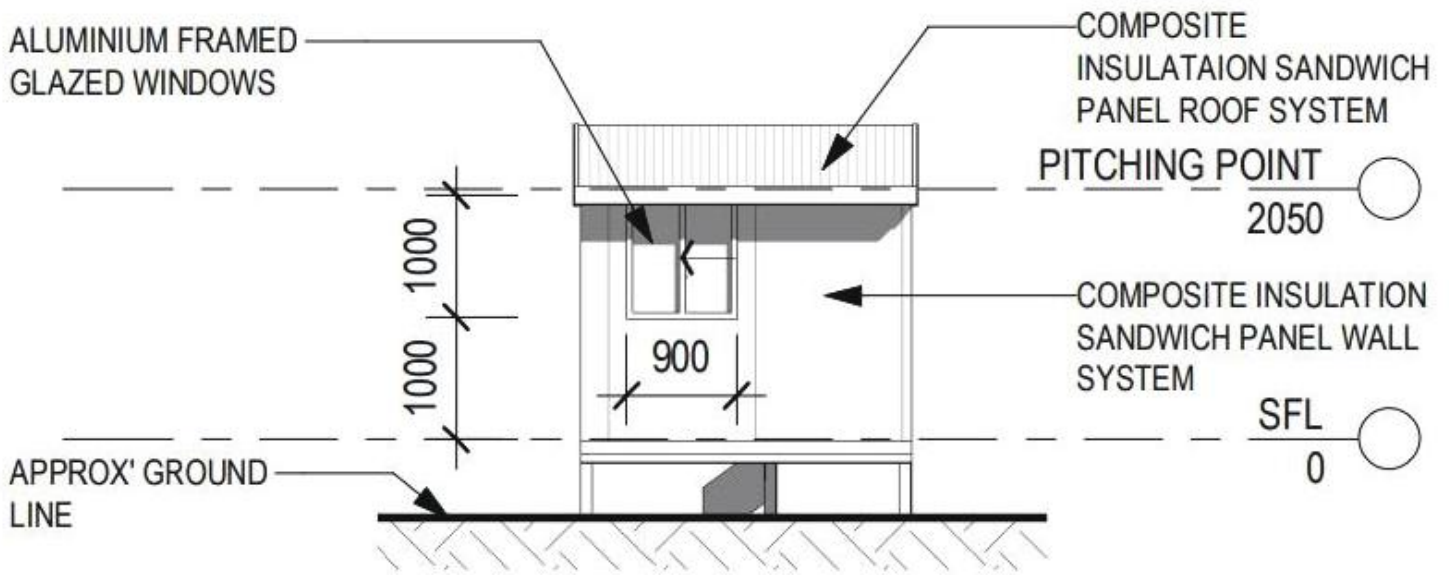
FRONT ELEVATION

SCALE: 1 : 100



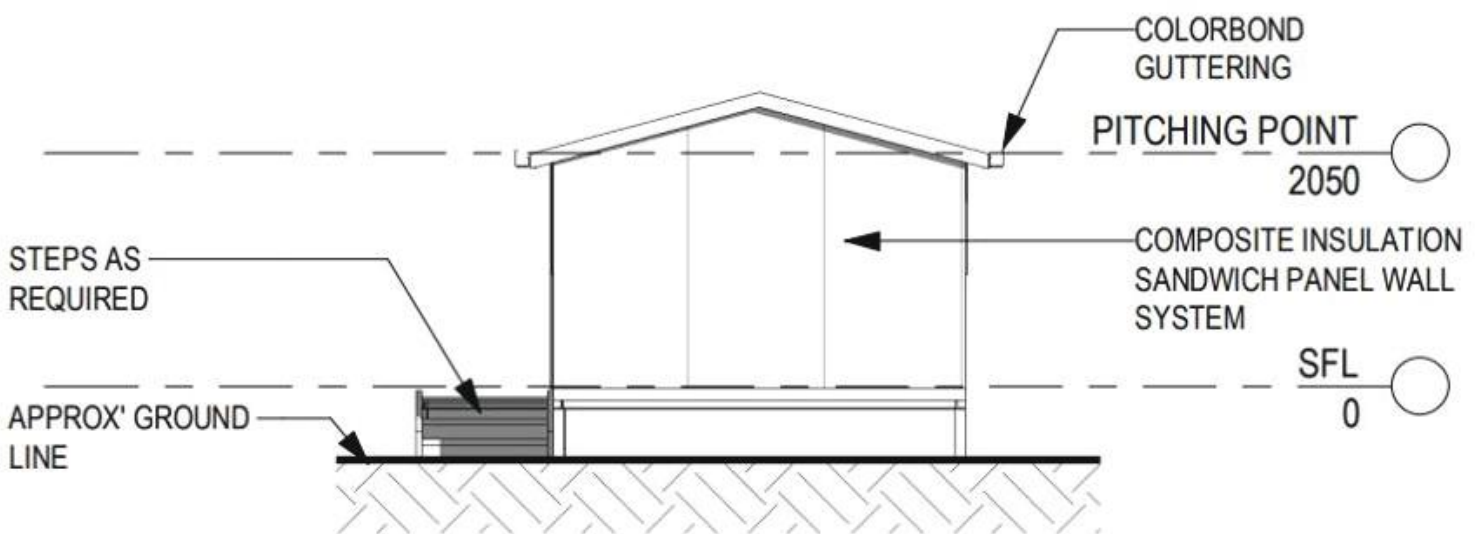
SIDE ELEVATION

SCALE: 1 : 100



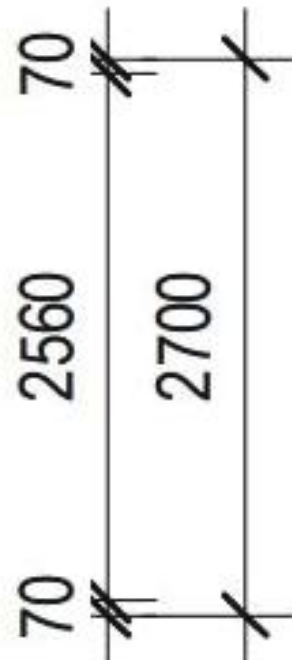
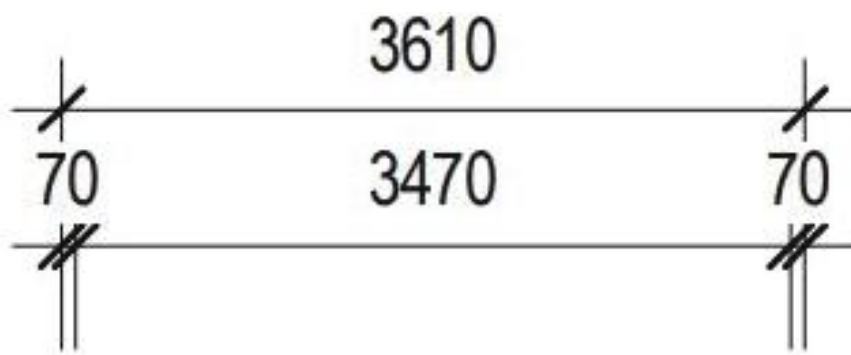
REAR ELEVATION

SCALE: 1 : 100



SIDE ELEVATION

SCALE: 1 : 100



Contact us:

04 3426 1155

or visit

www.thecabinwarehouse.com.au